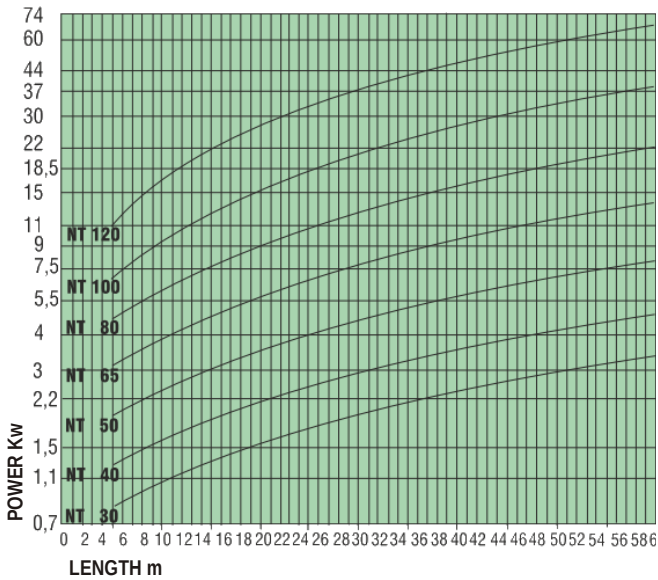


## TECHNICAL DATA

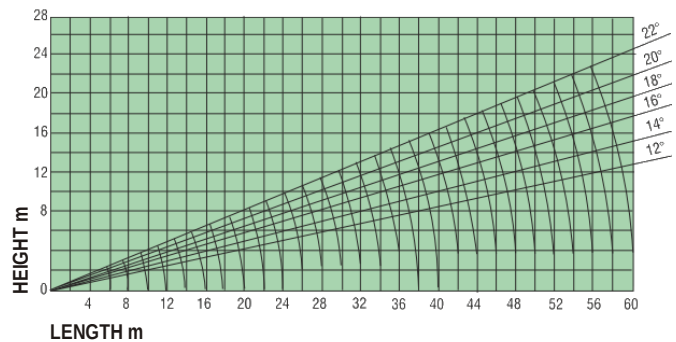
| Modello<br>Modèle<br>Type | Larghezza telo<br>Largeur toile<br>Belt width<br>(mm) | Larg. traliccio<br>Largeur treillis<br>Frame width<br>(mm) | Velocità telo<br>Vitesse toile<br>Belt speed<br>(m/sec min) | Portata max consigli. a 18°<br>Capacité max. conseil. à 18°<br>Max capacity suggest. at 18°<br>(T/h) | Pezzatura max<br>Granulometrie max<br>Max conv. size<br>(mm) | Disp. rulli portanti<br>Disp. rouleaux portants<br>Upper rollers arrangement |
|---------------------------|---|--|---|--|--|--|
| NT 40                     | 400   | 750  | 1,75  | 82   | 85   |  |
| NT 50                     | 500   | 870  | 1,75  | 137  | 125  |  |
| NT 65                     | 650   | 1020   | 2,00  | 310  | 170  |  |
| NT 80                     | 800   | 1210   | 2,00  | 490  | 225  |  |
| NT 100                    | 1000  | 1460   | 2,25  | 900  | 300  |  |
| NT 120                    | 1200  | 1700   | 2,25  | 1330   | 380  |  |



## DIAGRAM



Graphic to select the length of the belt according to the distance desired and height.



Le caratteristiche, foto e dimensioni non sono impegnative. Baioni Crushing Plants SpA si riserva il diritto di apportare modifiche alle specifiche senza preavviso.  
 Les caractéristiques, photos et dimensions n'engagent pas la Baioni Crushing Plants SpA qui se réserve le droit d'apporter des modifications sans préavis.  
 Characteristics, photos and dimensions are not binding. Baioni Crushing Plants SpA reserves the right to modify the specifications herein without prior notice.